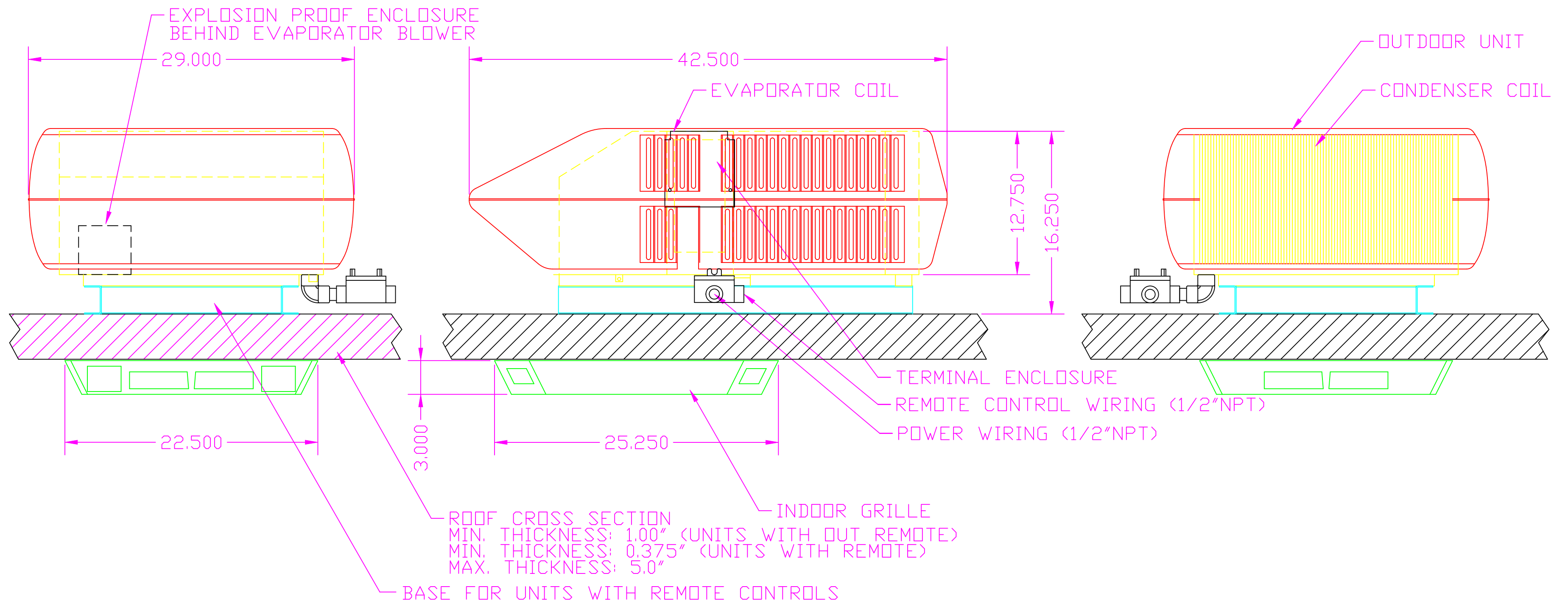


**NOTES:**

1. ALL DIMENSIONS ARE SHOWN IN INCHES.




| MODEL NO.        | CAPACITY<br>BTU/HR | VOLTAGE<br>60 Hz | FUSE SIZE<br>AMPS | UNIT<br>AMPS | COMPRESSOR<br>F.L.A. | COMPRESSOR<br>L.R.A. | FAN<br>F.L.A. | AIR FLOW<br>CFM | CHARGE<br>R-410A oz. | NET WEIGHT<br>LBS |
|------------------|--------------------|------------------|-------------------|--------------|----------------------|----------------------|---------------|-----------------|----------------------|-------------------|
| RACX-1352-A-**** | 13,500             | 115              | 20                | 14.5         | 11.1                 | 59.3                 | 3.4           | 320             | 15.0                 | 150               |

**\*\*\*\* EXPLOSION PROOF CLASSIFICATION:**

- ICD2/2IIABT3 INTERNAL and EXTERNAL ELECTRICAL CLASSIFICATION  
NEC CLASS I GROUP C&D DIVISION 2 T3 TEMPERATURE CODE  
AND IEC ZONE 2, GROUP IIA&IIB T3 TEMPERATURE CODE (REMOTE CONTROL REQUIRED 50710048)
- ICD2 INTERNAL and EXTERNAL ELECTRICAL CLASSIFICATION  
N.E.C. CLASS I GROUP C/D DIVISION 2 (REMOTE CONTROL REQUIRED 50710051)
- IBCD2 INTERNAL and EXTERNAL ELECTRICAL CLASSIFICATION  
N.E.C. CLASS I GROUP B,C/D DIVISION 2 (REMOTE CONTROL REQUIRED 50710048)
- 2IIABT3 INTERNAL and EXTERNAL ELECTRICAL CLASSIFICATION  
AND IEC ZONE 2, GROUP IIA&IIB T3 TEMPERATURE CODE (REMOTE CONTROL REQUIRED 50710048)

**SPECIFICATIONS:**

- (STANDARD) MOLDED CORROSION RESISTANT HOUSING
- (STANDARD) EVAPORATOR COIL COPPER TUBES WITH ALUMINUM FINS AND  
CONDENSER COIL COPPER TUBES WITH ALUMINUM FINS ENAMEL COATED
- (OPTIONAL) /CCX CONDENSER COIL ONLY SaveCoil 101 COATED
- (OPTIONAL) /CC CONDENSER AND EVAPORATOR COILS SaveCoil 101 COATED
- (OPTIONAL) /LAC LOW AMBIENT CONTROL FOR OPERATING WHEN OUTDOOR AMBIENTS ARE BELOW 55°F
- (OPTIONAL) /EC ALL SHEET METAL PARTS EPOXY FINISHED
- (OPTIONAL) /SH TYPE 316 STAINLESS STEEL HOUSING
- (OPTIONAL) /CTD COMPRESSOR TIME DELAY
- (OPTIONAL) /EXP EXPORT CRATED FOR SEA OR AIR SHIPMENT

|   |             |  |                  |
|---|-------------|--|------------------|
| .X= ± 0.1" .XX= ± 0.05" .XXX= ± 0.01"<br>FRACTIONS= ± 1/8" ANGLES= ± 1.0° |             |  <b>SCIENTIFIC SYSTEMS LLC</b><br>7924 Reco Avenue, Baton Rouge, Louisiana 70814 U.S.A. |                  |
| MATRL   | DRWN L.D.T. |  |                  |
| FINISH  | CHKD        | ENGINEERING DATA SHEET   | REV B DATE 10/17 |
| ACAD# 50710053  | APVD        | DWG.# 071-50-0053  | SCALE SHT OF     |